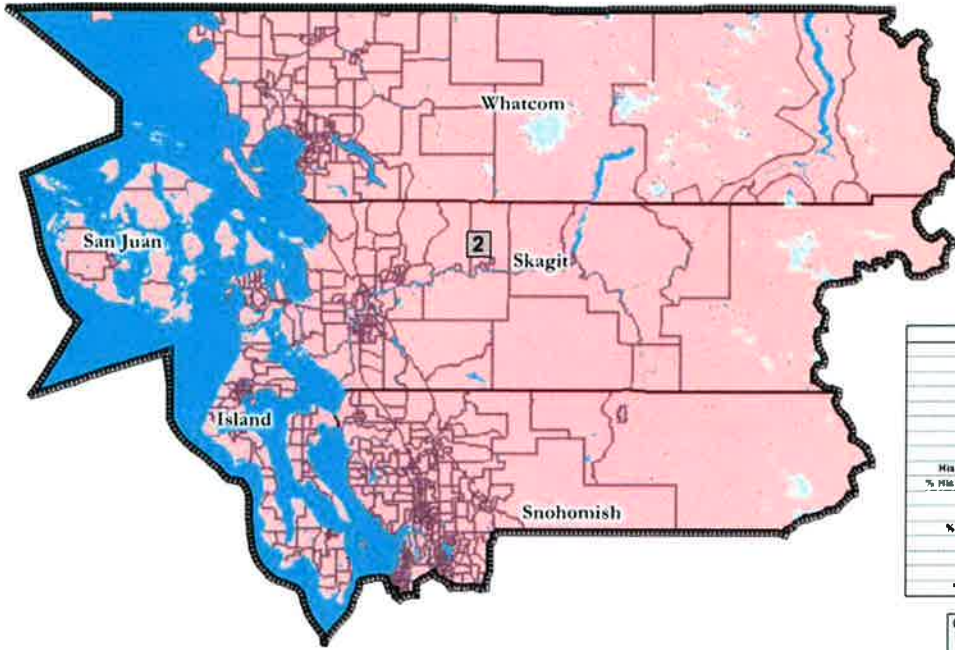






# Second Congressional District

## North Western Washington

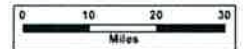


Field	Value
District	2
Population	672454
Deviation	0
% Deviation	0%
NH_Whi	542730
% NH_Whi	80.71%
Black	9121
% Black	1.36%
Hispanic Origin	61724
% Hispanic Origin	9.18%
18+_Pop	518763
NH18+_Whi	435919
% NH18+_Whi	84.03%
18+_Blk	8479
% 18+_Blk	1.25%
H18+_Pop	36472
% H18+_Pop	7.03%

# Third Congressional District Columbia River Valley

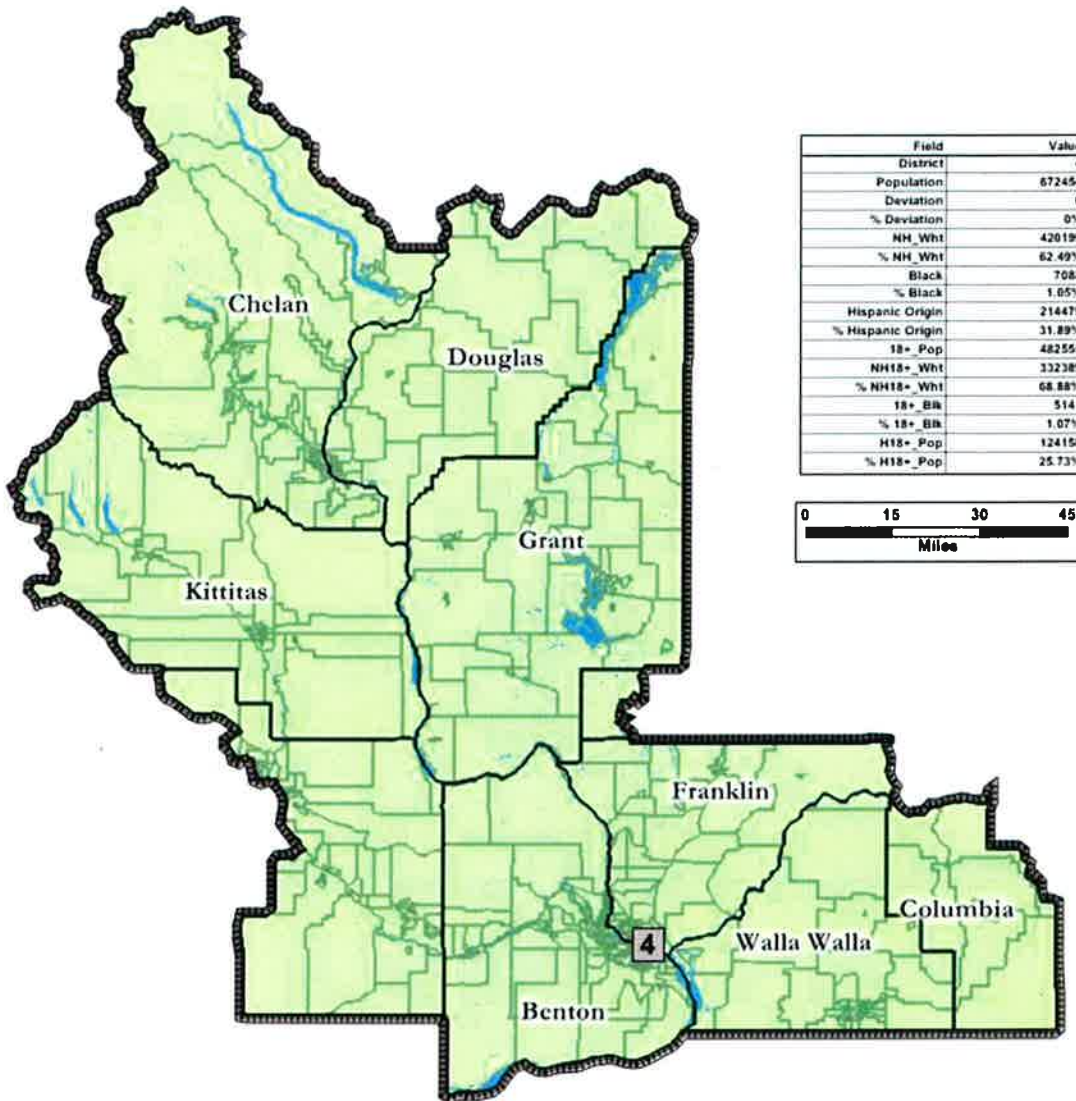


Field	Value
District	3
Population	872454
Deviation	0%
% Deviation	0%
NH_Whi	518938
% NH_Whi	77.17%
Black	10859
% Black	1.81%
Hispanic Origin	90087
% Hispanic Origin	13.4%
18+ Pop	495237
NH18+ Whi	401763
% NH18+ Whi	81.13%
18+ Blk	7509
% 18+ Blk	1.52%
H18+ Pop	51006
% H18+ Pop	10.48%



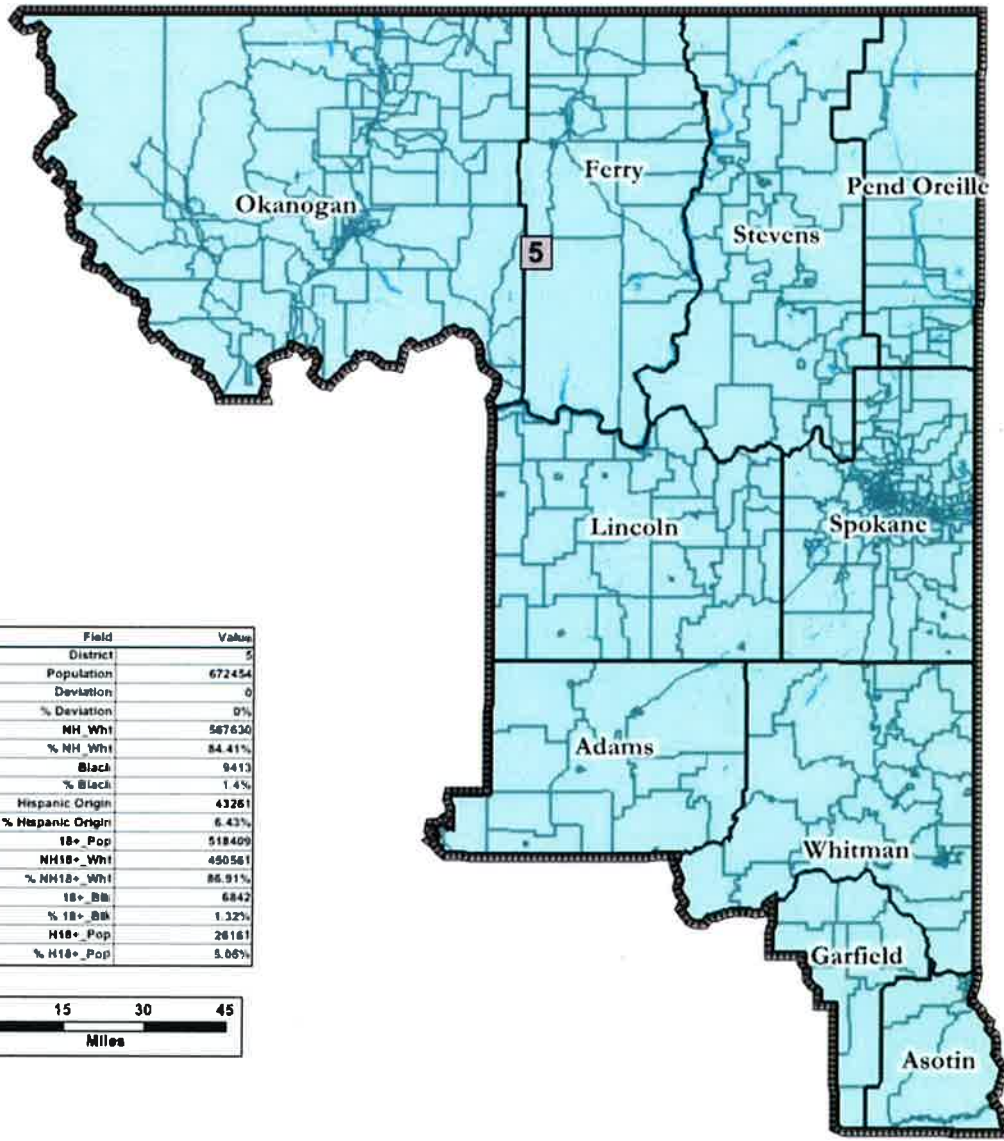
# Fourth Congressional District

## Tri-Cities and Central Washington



# Fifth Congressional District

## Spokane and Eastern Washington

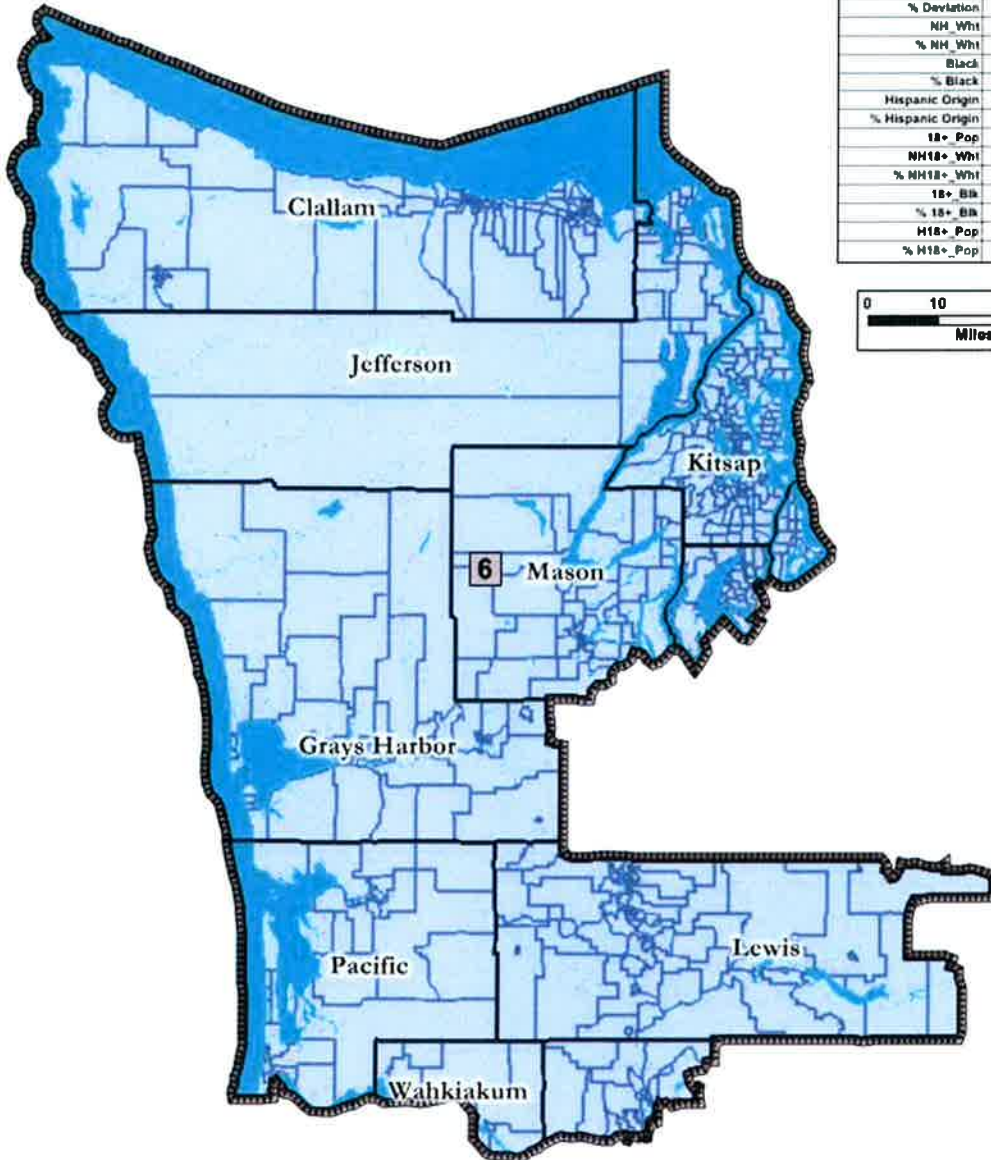


Field	Value
District	5
Population	672454
Deviation	0
% Deviation	0%
NH_Whi	567630
% NH_Whi	84.41%
Black	9413
% Black	1.4%
Hispanic Origin	43261
% Hispanic Origin	6.43%
18+_Pop	518409
NH18+_Whi	490561
% NH18+_Whi	86.91%
18+_Blk	6842
% 18+_Blk	1.32%
H18+_Pop	26181
% H18+_Pop	5.06%



# Sixth Congressional District

## Pacific Coast and Kitsap Peninsula

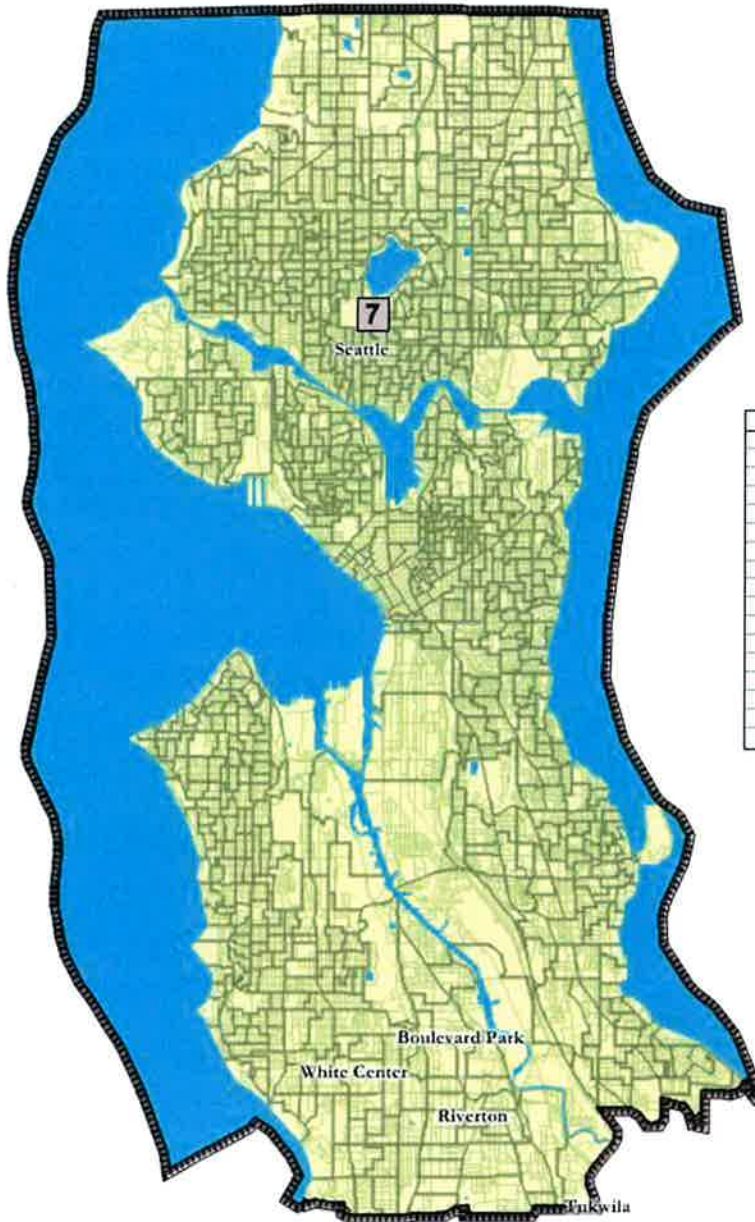


Field	Value
District	6
Population	672454
Deviation	0
% Deviation	0%
NH_Whi	958284
% NH_Whi	83.02%
Black	10202
% Black	1.52%
Hispanic Origin	43105
% Hispanic Origin	6.41%
18+ Pop	529282
NH18+ Whi	454391
% NH18+ Whi	85.85%
18+ Blk	7903
% 18+ Blk	1.49%
H18+ Pop	25851
% H18+ Pop	4.88%

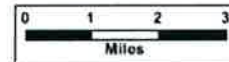


# Seventh Congressional District

## Seattle



Field	Value
District	7
Population	672454
Deviation	0
% Deviation	0%
NH_Whi	430158
% NH_Whi	63.97%
Black	55137
% Black	8.2%
Hispanic Origin	54223
% Hispanic Origin	8.06%
18+_Pop	563522
NH18+_Whi	377088
% NH18+_Whi	66.92%
18+_Blk	41471
% 18+_Blk	7.36%
H18+_Pop	30177
% H18+_Pop	0.53%

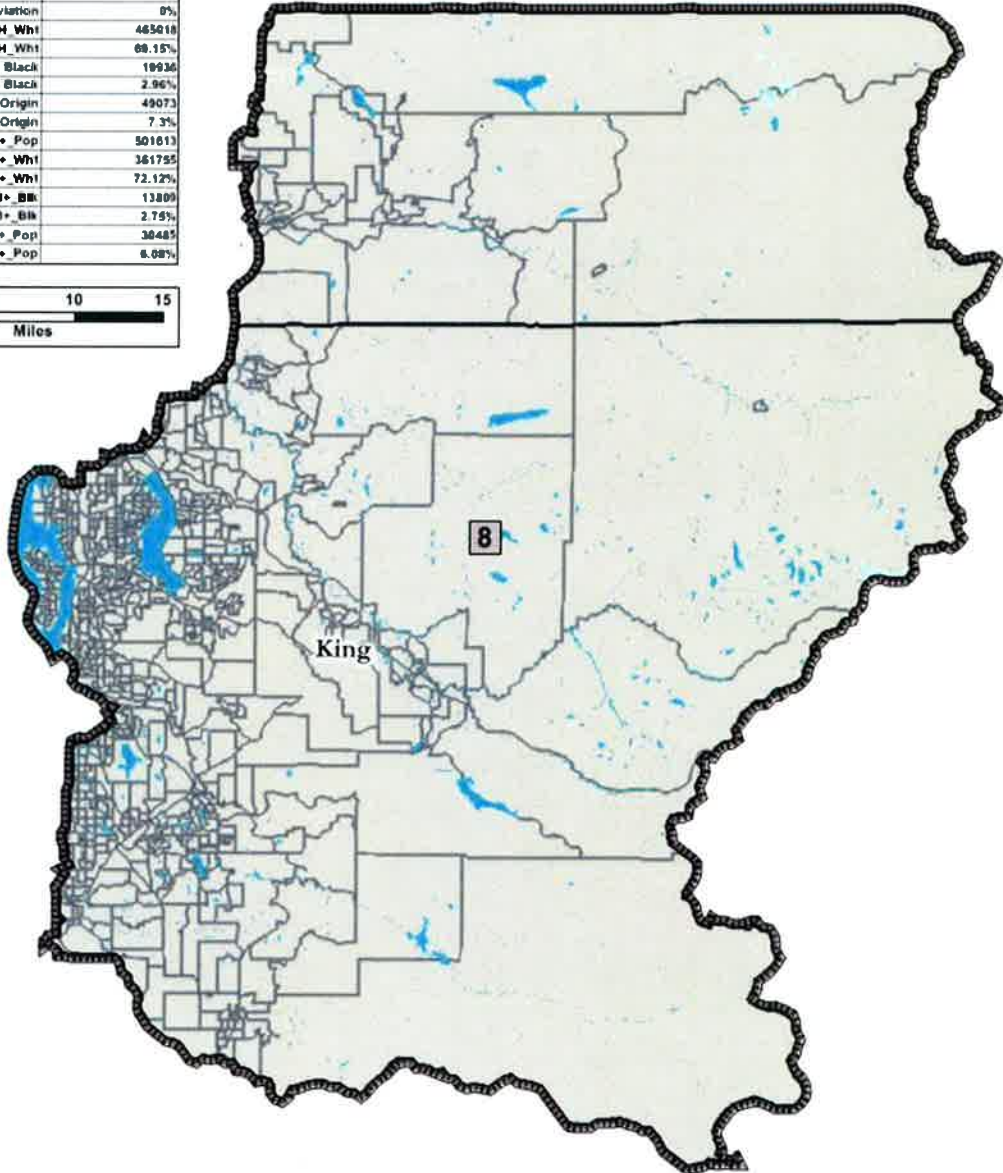
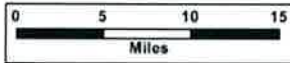




# Eighth Congressional District

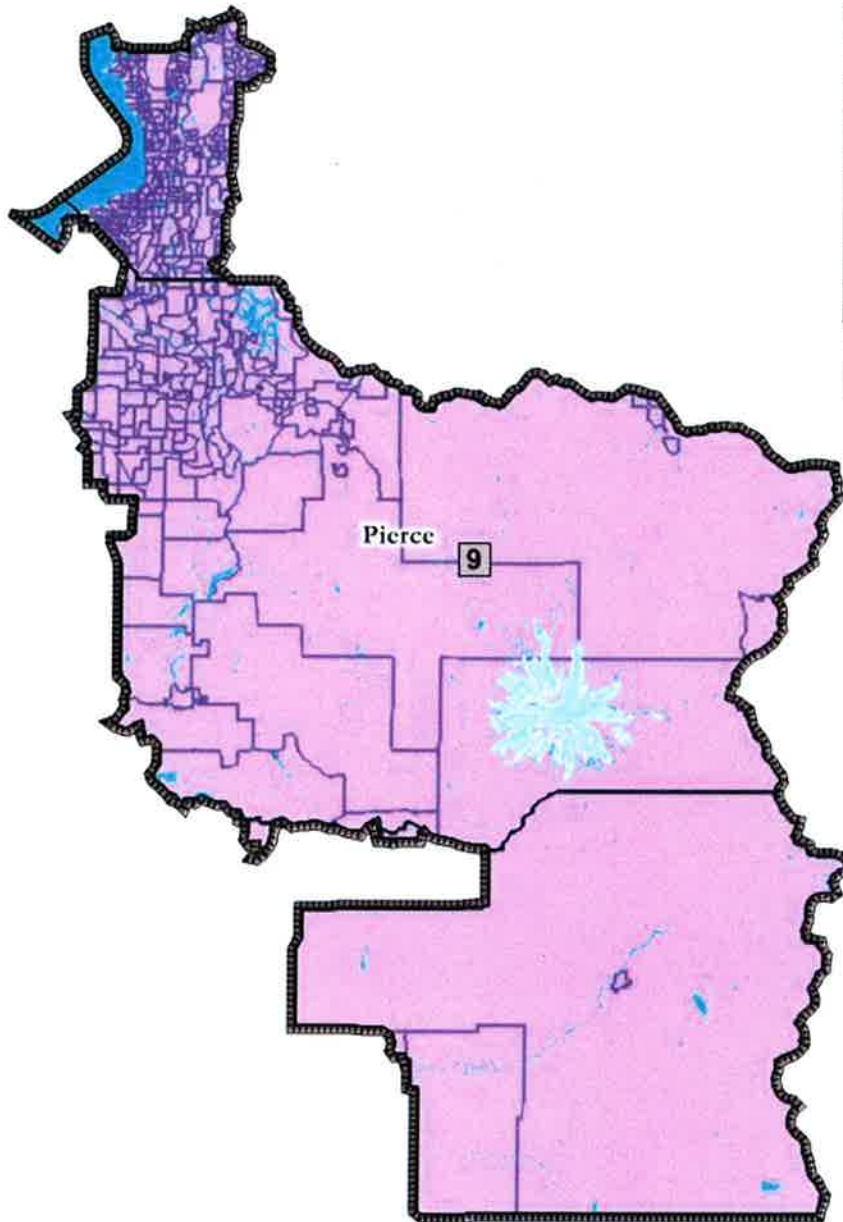
## East King County

Field	Value
District	8
Population	672494
Deviation	0
% Deviation	0%
NH_Whi	465018
% NH_Whi	68.15%
Black	10936
% Black	2.96%
Hispanic Origin	49073
% Hispanic Origin	7.3%
18+ Pop	501013
NH18+ Whi	361795
% NH18+ Whi	72.12%
18+ Blk	13809
% 18+ Blk	2.75%
H18+ Pop	30485
% H18+ Pop	6.08%



# Ninth Congressional District

## Federal Way, East Pierce County



Field	Value
District	9
Population	872454
Deviation	0
% Deviation	0%
NH_Whi	438448
% NH_Whi	65.2%
Black	49066
% Black	7.3%
Hispanic Origin	76344
% Hispanic Origin	11.35%
18+_Pop	504098
NH18+_Whi	348466
% NH18+_Whi	69.33%
18+_Blk	34525
% 18+_Blk	6.85%
H18+_Pop	46050
% H18+_Pop	9.14%



# Tenth Congressional District

## Tacoma, Olympia, Joint Base Lewis-McChord

Field	Value
District	10
Population	672454
Deviation	0
% Deviation	0%
NH_Whi	458867
% NH_Whi	67.94%
Black	50033
% Black	7.44%
Hispanic_Origin	65638
% Hispanic_Origin	9.76%
18+ Pop	512422
NH18+_Whi	369520
% NH18+_Whi	72.11%
18+_Blk	36570
% 18+_Blk	7.14%
H18+_Pop	39480
% H18+_Pop	7.7%

